



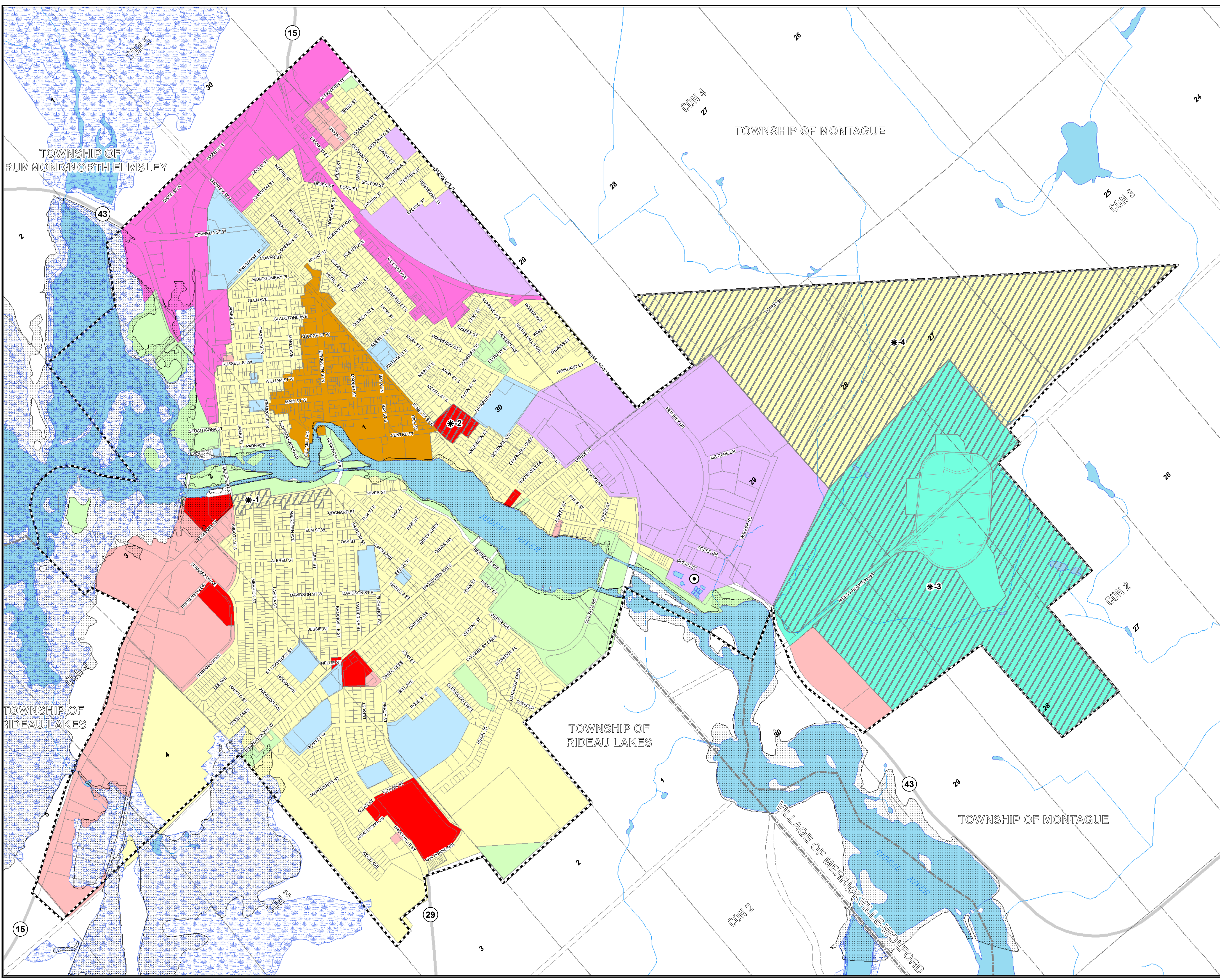
OFFICIAL PLAN
TOWN OF SMITHS FALLS
SCHEDULE A
LAND USE PLAN

Scale: 1:7,500
 250 125 0 250
 Meters



- Legend**
- Geographic Township
 - Drainage
 - Water Body
 - Road Allowance/Lot Line
 - Parcel Fabric
 - Municipal Boundary

- Official Plan**
- Residential
 - Neighbourhood Servicing Commercial
 - Corridor Commercial
 - Downtown Core
 - Major Institutional
 - Uptown Mixed-Use
 - Gallepeau Centre - Mixed-Use
 - Industrial
 - Open Space
 - 100 Year Flood Plain
 - PSWs
 - Wastewater Treatment Plant
 - Specific Policy Area



Data Source: Source Data has been provided by the Ministry of Natural Resources, Rideau Valley Conservation Authority, and the Town of Smiths Falls.

Adopted: 20 Oct 2014
 Revised: 10 Jul 2015
 Plot Date: 10 Jul 2015
 JLR No.: 26152

This drawing is copyright protected and may not be reproduced or used for purposes other than execution of the described work without the express written consent of J.L. Richards & Associates Limited.

File Path: P:\2600026152 - Smiths Falls Official Plan\JLR DWG\Plan\Schedule A.mxd